

RCNJ

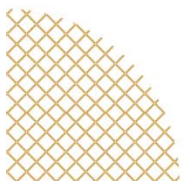


Capital Projects Update



Faculty Assembly

January 22, 2025



E-Wing Renovation: Nursing Expansion

Before

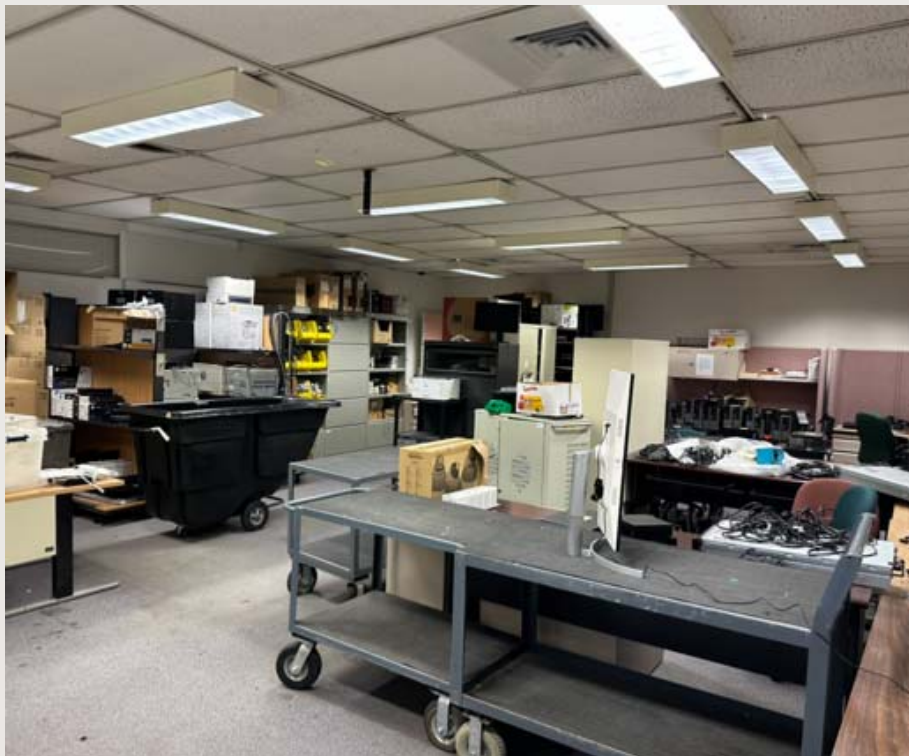


After



E-Wing Renovation: Nursing Expansion

Before



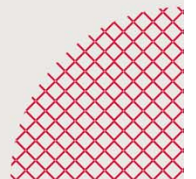
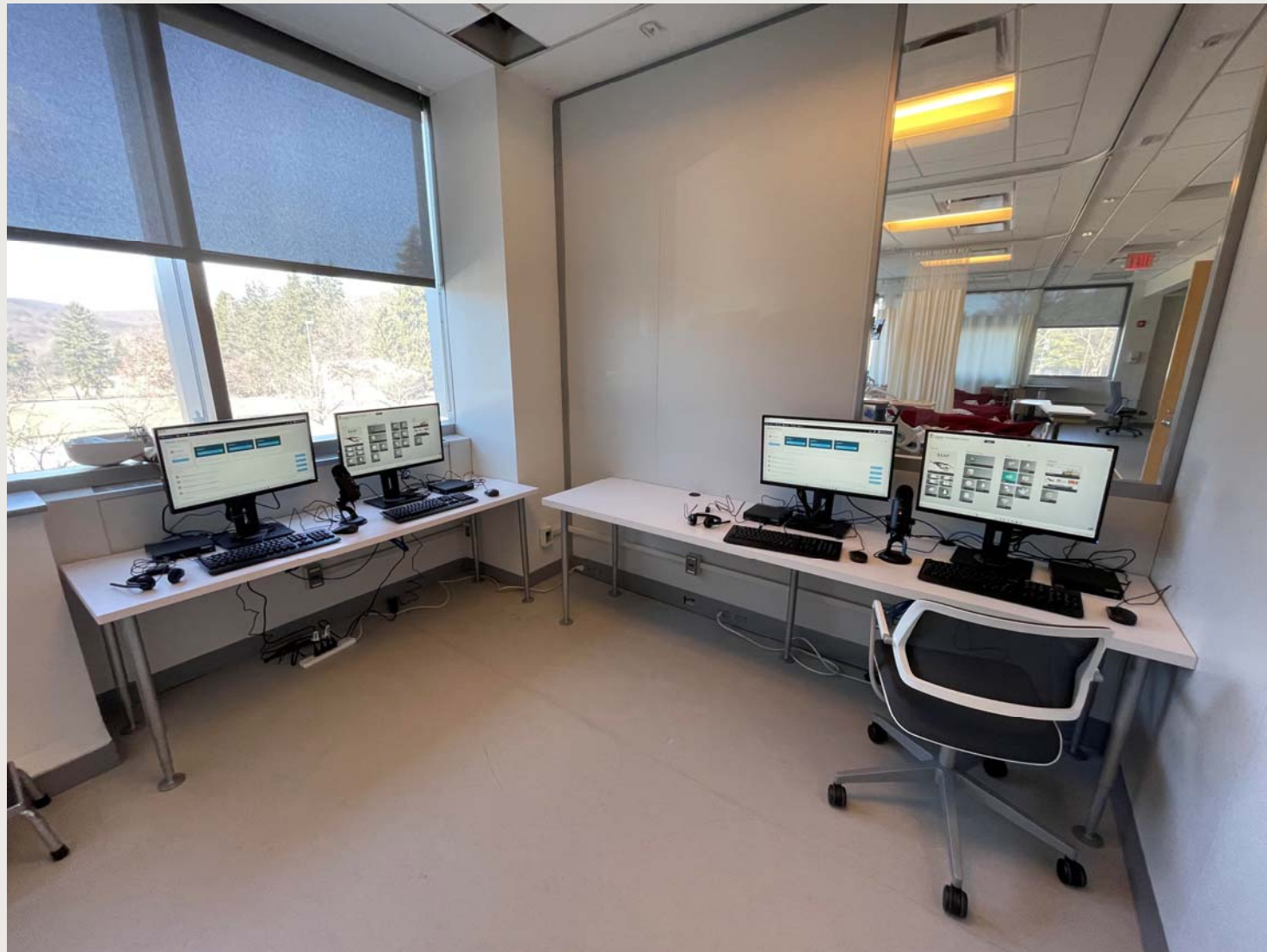
After



E-Wing Renovation: Wall Wrap



Nursing: New SimCapture Stations and Control Room



Honor's Lounge Renovation

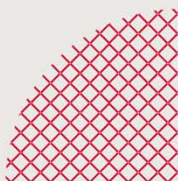
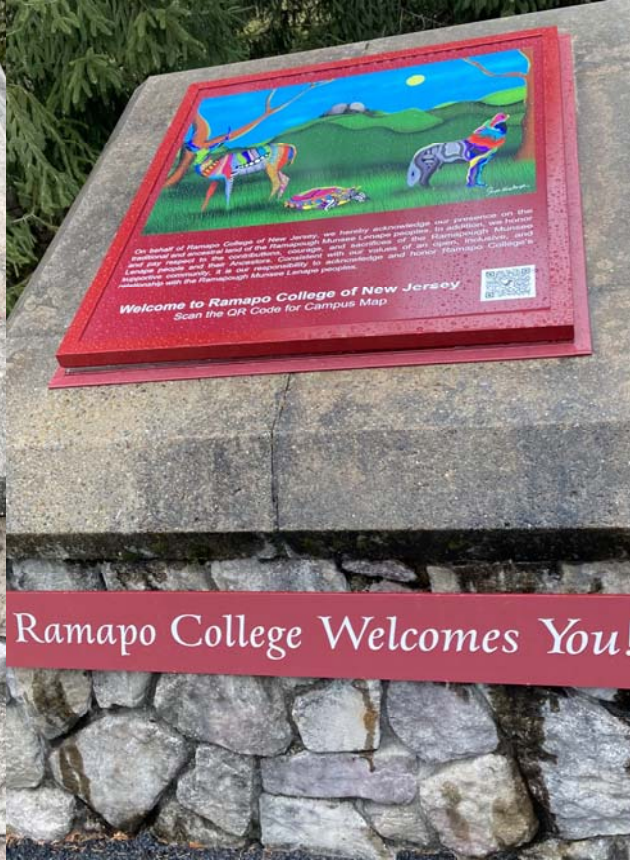
Before

After

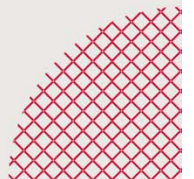




Updated Signage: Welcome Monuments and Parking Lots



Updates for Athletic Fields (NCAA Requirements)

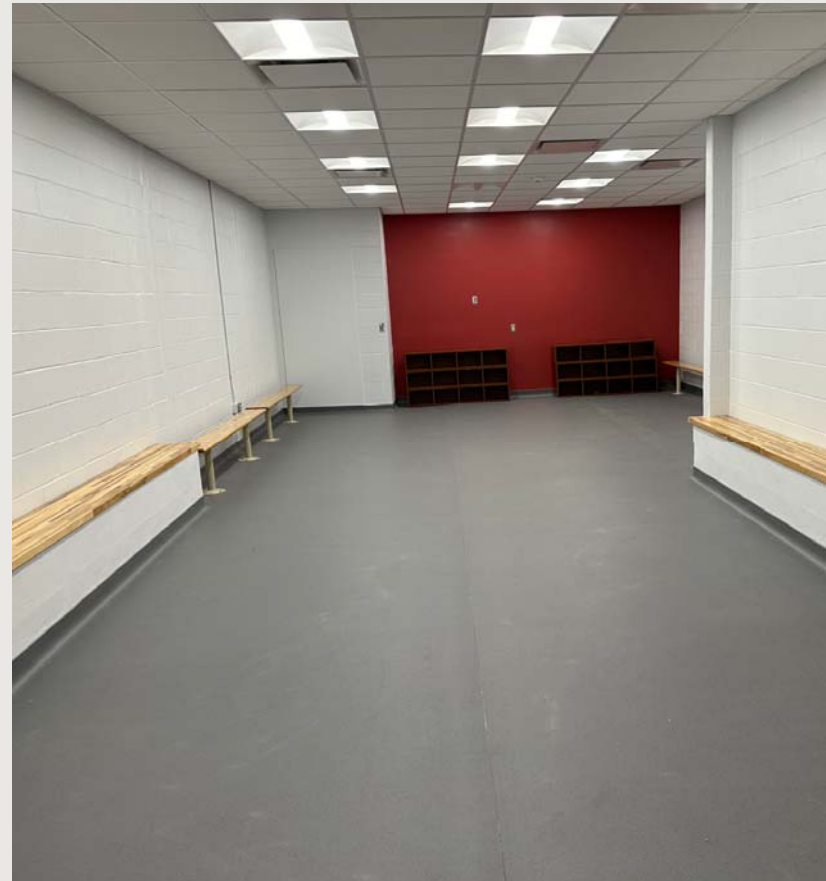


Bradley Center Women's Team Room Renovation

Before



After



Village Stairs Replacement

Before

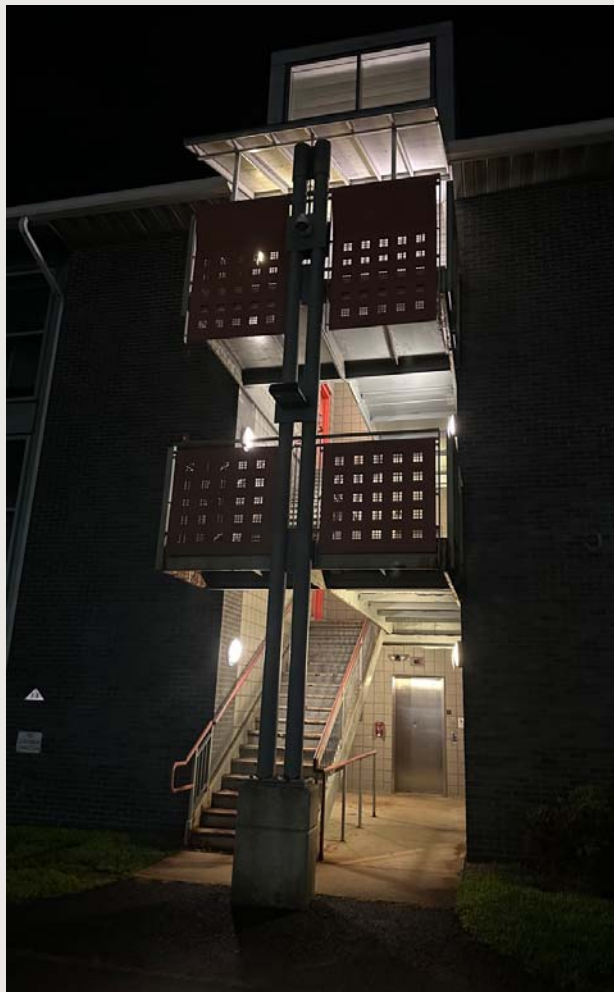


After

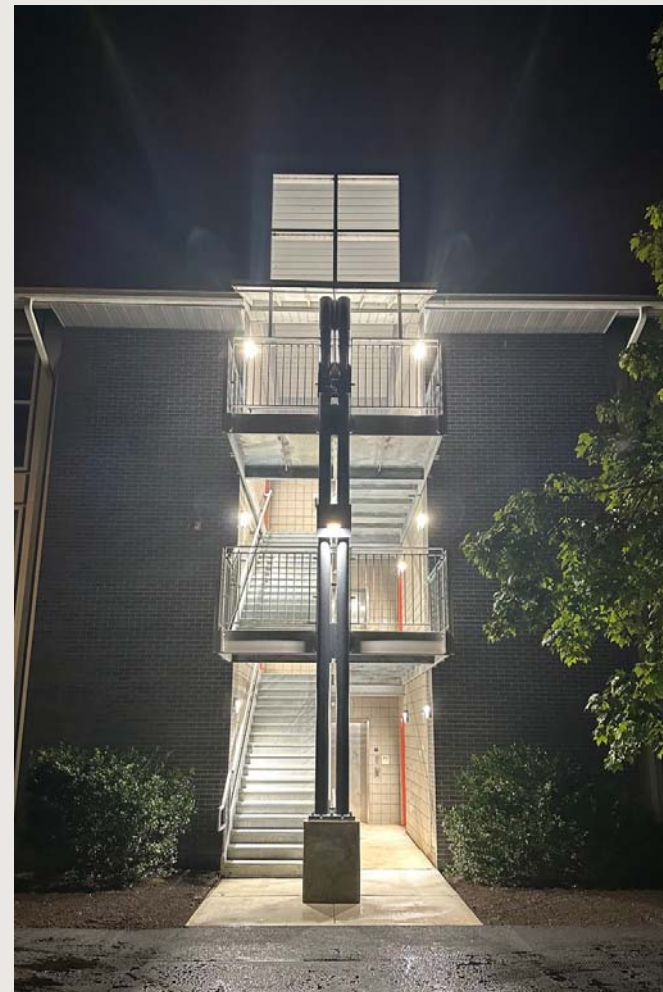


Village Stairs Replacement

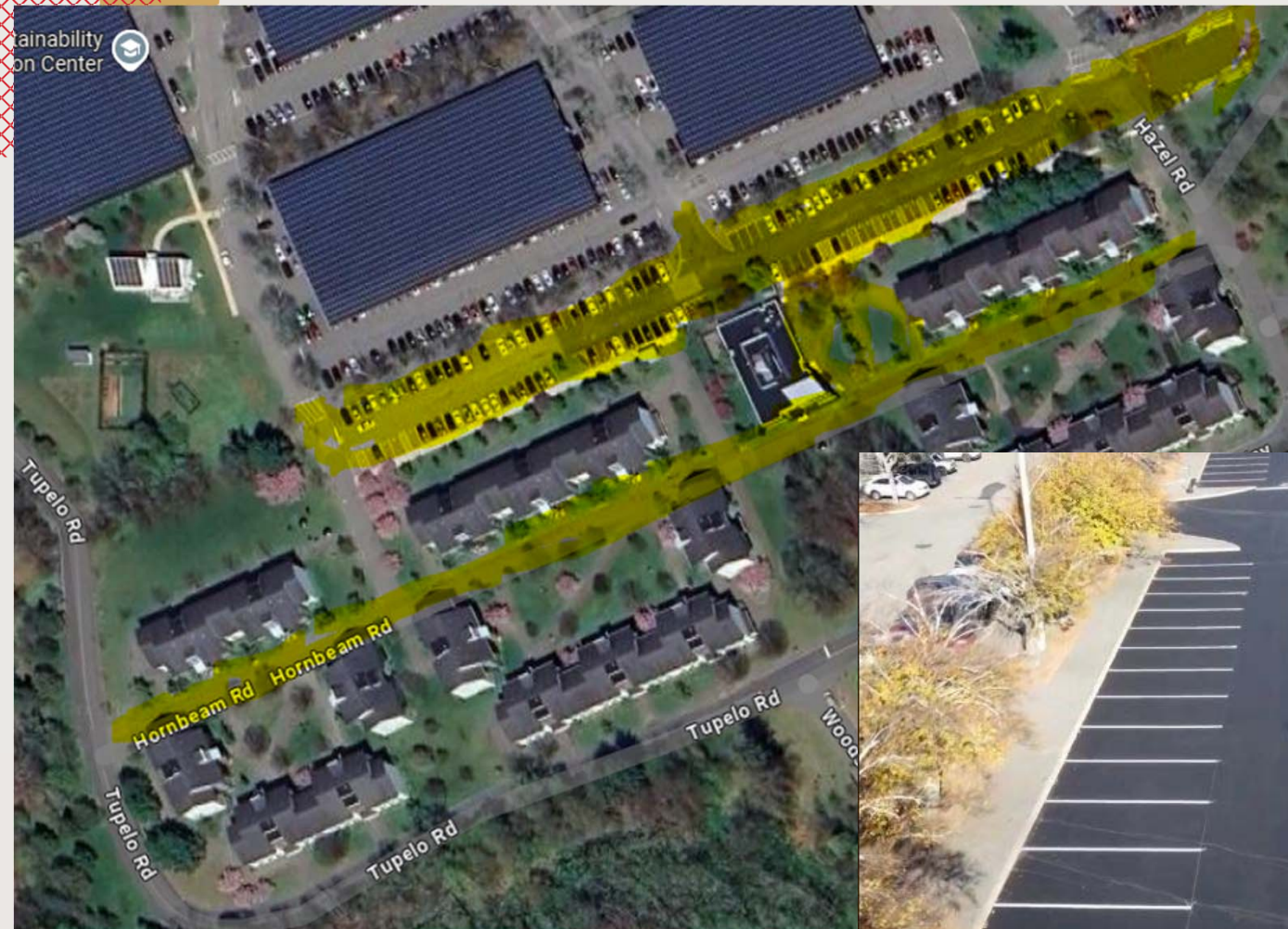
Before



After



Village Area Paving



Student Center Transformer



Spiritual Center Demo

Before



After



Spiritual Center Demo

Before



After



Spiritual Center Demo

Before

After



Spiritual Center Demo

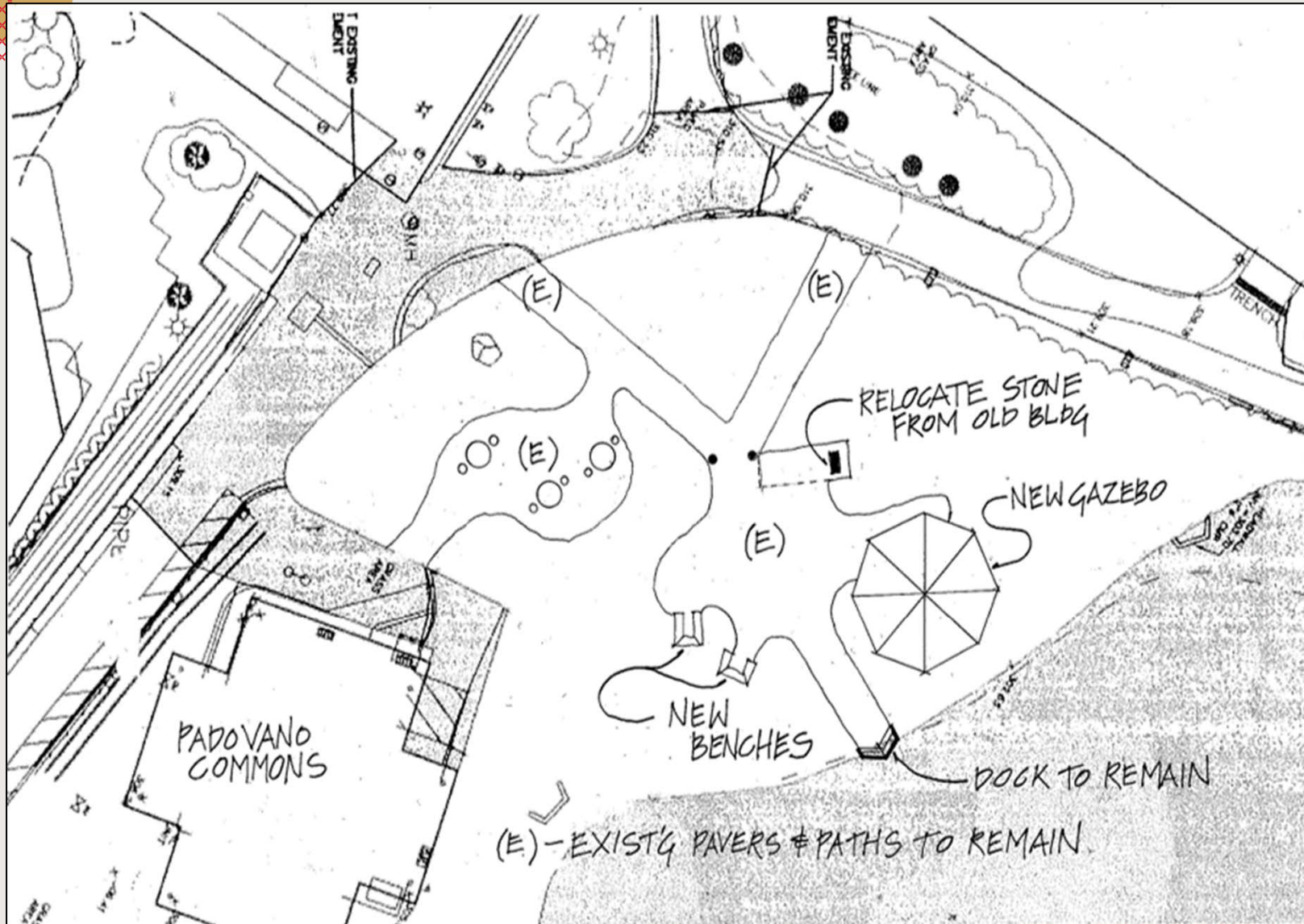
Before



After



Spiritual Center Rejuvenation



Spiritual Center Rejuvenation



Paving Projects

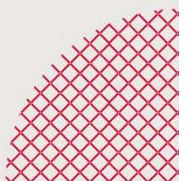
(Mackin/Bischoff/Pavilion Lots & Curb Cutouts)



Linden Reno Project



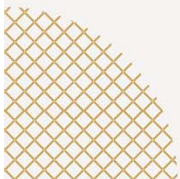
- Units going to Linden: Public Safety (and ID Card Office), Student Health Services, Counseling Services, POER, Fiscal Health (Budget, Business Services), Grants, Events & Conferences
- After Linden: ResLife and Student Mailroom back to C-wing, Indoor Spiritual Center in D-wing, and several other potential changes



Status of On-Going Capital Projects

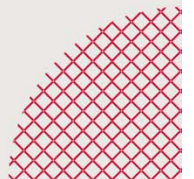
- Athletic Field Lights (Electrical transformer work remains with contractor and O&R)
- Stormwater Runoff Compliance Repairs (On-going; ~75% complete for FY25 needs)
- Birch Kitchen Floor and Grease Trap Replacement (Planning with contractor)
- HVAC Systems Replacements (Assessing costs for 5 large projects)
- Electrical Infrastructure (Planning 3 days of outages in May for necessary work)
- Overlook Pedestrian Bridge Replacement (Engineer design work in progress)
- Overlook Parking Lot Retaining Wall Repair (Assessing project requirements)
- Paving Projects (Coordination with NJ DOT in progress)
- ResLife FFE Life Cycle Replacement (Near term focus on mattresses & shower pans)
- Network Switch Replacements (Developing cost estimates)
- CCTV Upgrades and Replacements (~80% complete for FY25 needs)
- First Gen Center Expansion (Grant-funded; planning in progress)
- ResLife Room Restorations (~10% complete)
- Mansions Restoration Project (Next: hire architect to conduct feasibility assessment)

- Future Needs: Bradley / Berrie / McBride Roofs, Overlook/Laurel CCTV, Hot Water Recirculation Lines, more NCAA compliance requirements, H-wing exit door ...



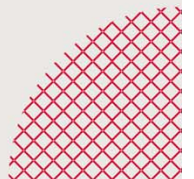
ITS Projects

- Modernization of Banner
 - Degree Works (deprecate UAchieve by Nov 2026)
 - Ellucian Experience
 - Banner Document Management
 - Optimize use of Student, Finance, Financial Aid, and HR modules
 - Report Consolidation
 - Data Democratization and Data Governance
- Life Cycle Replacement of Deprecating Systems
 - Computers
 - Network Switches
 - WiFi Access Points
- Cybersecurity and Threat Risk Mitigation
 - Audit and PenTest recommendations
 - MFA
 - Role Based Access and Security Controls
 - Training via Ninjio



Computers

- Inventory: 2,276 computers
 - 246 no logons during calendar year 2024
 - 1,466 Windows 10 (Microsoft ends support after Sep 2025)
 - By usage type: (* indicates areas where we will not necessarily do 1 for 1 replacement)
 - Faculty and Staff 1,006*
 - Lab 822*
 - Classroom 180*
 - Common Area 115*
 - Loaner 110
 - Club 29*
 - Meeting Room 10
 - System 4
- Life Cycle Replacement Planning
 - Priority: deprecating Mac and Windows 10 computers for faculty & staff
 - Default: 1 Windows laptop per employee
 - Unit may transfer budget difference for alternate system
 - Long term: moving toward BYOD system
 - “Plug and play” in classrooms
 - Students “bring your own device” (back-stopped by loaner system)
 - Some labs (not all) will have fewer computers



Lab Computers

| Location | Count | Reduce? | Location | Count | Reduce? |
|--------------------------|-------|---------|-----------------------------------|-------|---------|
| Adler Center Labs.AC001 | 3 | | E-Wing Labs.E217 | 7 | |
| Adler Center Labs.AC108 | 8 | | E-Wing Labs.E233 | 9 | |
| Adler Center Labs.AC109 | 9 | | G-Wing Labs.G-124 | 18 | |
| Adler Center Labs.AC209 | 13 | | G-Wing Labs.G-132 | 11 | |
| ASB Labs.ASB219 | 36 | Y | G-Wing Labs.G-223 | 5 | |
| ASB Labs.ASB220 | 36 | Y | G-Wing Labs.G-253 | 11 | |
| ASB Labs.ASB321 | 36 | Y | G-Wing Labs.G-266 | 8 | |
| ASB Labs.ASB420 | 31 | | G-Wing Labs.G-301 | 29 | |
| ASB Labs.ASB423 | 24 | | G-Wing Labs.G-333 | 13 | |
| ASB Labs.ASB426 | 34 | | H-Wing Labs.H105 | 18 | |
| ASB Labs.ASB428 | 16 | | H-Wing Labs.H115 | 3 | |
| ASB Labs.ASB429 | 34 | | H-Wing Labs.H123 | 19 | |
| ASB Labs.Trading Lab | 33 | | H-Wing Labs.H204 | 19 | |
| A-Wing Labs | 4 | | Learning Commons Labs.IDC Lab | 17 | |
| Berrie Center Labs.BC138 | 20 | | Learning Commons Labs.IGG Lab | 16 | |
| Berrie Center Labs.BC142 | 37 | | Learning Commons Labs.Jane Addams | 5 | |
| B-Wing Labs.B118 | 33 | Y | Learning Commons Labs.LC-101 | 33 | |
| B-Wing Labs.B127 | 17 | Y | Learning Commons Labs.LC-327A | 6 | |
| B-Wing Labs.B228 | 33 | Y | Learning Commons Labs.LC-402 | 14 | |
| C-Wing Labs.C111 | 18 | | Learning Commons Labs.LC-420 | 4 | |
| C-Wing Labs.C114 | 21 | Y | Remote PC Lab | 4 | |
| C-Wing Labs.OSS Lab | 9 | | | | |

Lab Computers: Example of Max Number of Concurrent Logins

| | Sun | Mon | Tue | Wed | Thu | Fri | Sat |
|------------------|-----|-----|-----|-----|-----|-----|-----|
| Week of 9/1/24 | | | 1 | 1 | 1 | 1 | 1 |
| Week of 9/8/24 | 1 | 1 | 2 | 1 | 2 | 1 | 1 |
| Week of 9/15/24 | 1 | 1 | 1 | 1 | 1 | 1 | 1 |
| Week of 9/22/24 | 1 | 1 | 2 | 1 | 1 | 1 | 1 |
| Week of 9/29/24 | 1 | 1 | 2 | 1 | 1 | 1 | 1 |
| Week of 10/6/24 | 1 | 1 | 1 | 1 | 1 | 2 | 1 |
| Week of 10/13/24 | 1 | 1 | 2 | 2 | 1 | 1 | 1 |
| Week of 10/20/24 | 1 | 1 | 1 | 2 | 1 | 2 | 1 |
| Week of 10/27/24 | 1 | 1 | 1 | 3 | 2 | 1 | 1 |
| Week of 11/3/24 | 1 | 1 | 2 | 1 | 1 | 1 | 1 |
| Week of 11/10/24 | 1 | 1 | 1 | 1 | 1 | 1 | 1 |
| Week of 11/17/24 | 1 | 1 | 1 | 1 | 1 | 1 | 1 |
| Week of 11/24/24 | 1 | 1 | 1 | 1 | 1 | 1 | |
| Week of 12/1/24 | | | 1 | 1 | 1 | 2 | |
| Week of 12/8/24 | | 1 | 1 | 1 | | 1 | |
| Week of 12/15/24 | | | | 1 | | | |

Resources

- **»** \$120M in deferred maintenance and life cycle replacement needs
 - Annual budget: ~\$1.3M in DM and capital
 - Any thing above that must come from grants, debt (no capacity), or surplus
- Shared Governance
 - Comprehensive Facilities Planning Committee (quarterly)
 - Space Allocation Committee (as needed)
 - Strategic Technology Advisory Board (quarterly)
 - Capital Requests Process (annually)
 - Submit proposals via School Dean to Provost
 - Proposals must be endorsed by Provost and forwarded to me by 28 Feb
 - Capital Planning / Facilities assesses new requests along side existing identified needs
 - All requests reviewed by MET and endorsed for action or deferment
 - Outcome of budget process determines what can be funded

