

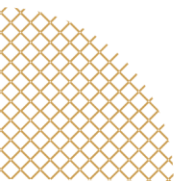
RCNJ



Welcome

Communications Meeting

11/14/2024



Agenda

- HSI Exploratory Task Force
- Enrollment News/Initiatives
- ERP & Capital Projects Update
- Policy News
 - Student Expressive Activity
 - Academic Freedom
- Calendar Review
- Announcements from RSA and FA
- Questions

Hispanic Serving Institution Exploration

Shared Governance Endeavor

A collaborative learning process to further our strategic goals by identifying and implementing strategies, investments, and practices that will have the potential to benefit all of our students and uplift our institution.

Ramapo's HSI Exploratory Task Force will study what it means to be an HSI. It will:

- review the federal HSI application process, timelines, and criteria;
- collect and analyze relevant data to gain a better understanding of Ramapo's Hispanic student population;
- advance opportunities for faculty, staff, and students to model best practices and formulate and participate in strategies aimed at strengthening campus climate, instruction, and student services; and
- offer findings and recommendations through an actionable report inclusive of potential immediate, short-, and long-term goals.

Membership will be confirmed December 2024

Final Report issued November 2025

- ✓ *As of Fall 2022, approximately 3.8M Hispanic students were enrolled in undergraduate programs across the United States. Hispanic students now make up nearly 22% of all undergraduate students in the U.S.*
- ✓ *Ramapo College actually exceeds these trends. Our Fall 2023 census file found that 25% of our undergraduate students are Hispanic— this is up from 14% in 2013.*

Fall 2024 Enrollment Overview

- **First-Year** - 106% of goal - 1126 students; largest ever
 - All 21 Counties in NJ; 45 students from Rockland and Orange NY
 - 48% first-generation, largest EOF class, largest honors group
 - Over 9,000 applications received (19% increase)
 - Overall acceptance rate decreased by 3% pts
- **Transfer** - 89% of goal - 433 students
- **HS Dual Enrollment and Non-Degree** - 202% of goal - 505 students
 - Over 30 new courses added, and 6 new partners
- **Continuing UG** - 99% of goal - 3,294 students
- **Graduate** - 106% of goal - 537 students
- **Total UG and GR Enrollment for Fall 2024** - 5,940 (5,476 in Fall 2023)

Fall 2025 Recruitment

Admissions Highlights

- Addition of the Border State Scholarships (\$10,000 per year, and additional \$4,000 per year if choosing to live on campus)
- Visiting over 450 HS fairs and visits in NJ and NY from Sept. 1 to Jan. 15
- Over 40 Onsite decision days scheduled between Nov. 15 and Dec. 15
- 25 group tours visited this Fall, most from underrepresented populations
- Saturday Tour attendance increased, and we offer tours in the evening and Spanish speaking
- Fall Open House attendance year over year increased by 15%
- Partnerships and New Initiatives
 - Ramapo@Bergen
 - Ramapo@PCCC and Ramapo@SCCC
 - ABSN - Accelerated Nursing
- Current Status Update of Fall 2025 FY Applications
 - Early Decision (Nov. 1 deadline) - 106 applications, (43% increase)
 - 2,700 applications overall thus far, (6% increase)
 - Early Action Deadline - December 15th

ERP: Banner 9

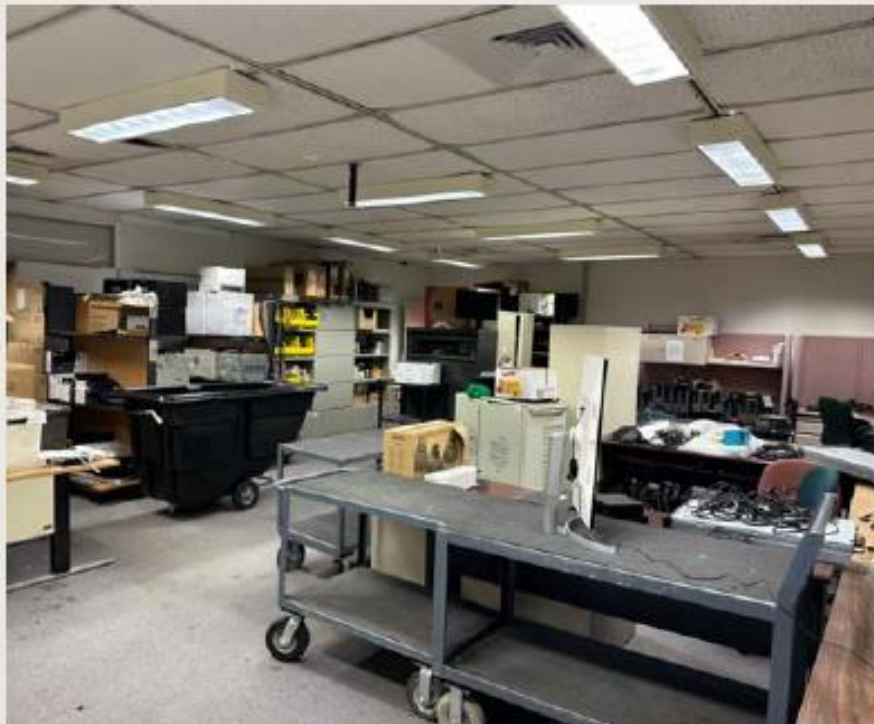
Modernization of Banner 9 on-prem:

- Implementing Degree Works
- Implementing Ellucian Experience
- Completing our assessment and optimization efforts in Student, Finance, Financial Aid, and POER with the assistance of contractor-provided professional services
- Streamlining our reports and improving our users' abilities to generate their own reports and dashboards
- Pursuing an electronic document management system

Recently Completed

- ✓ E-Wing Renovation for Nursing School Expansion

Before



After



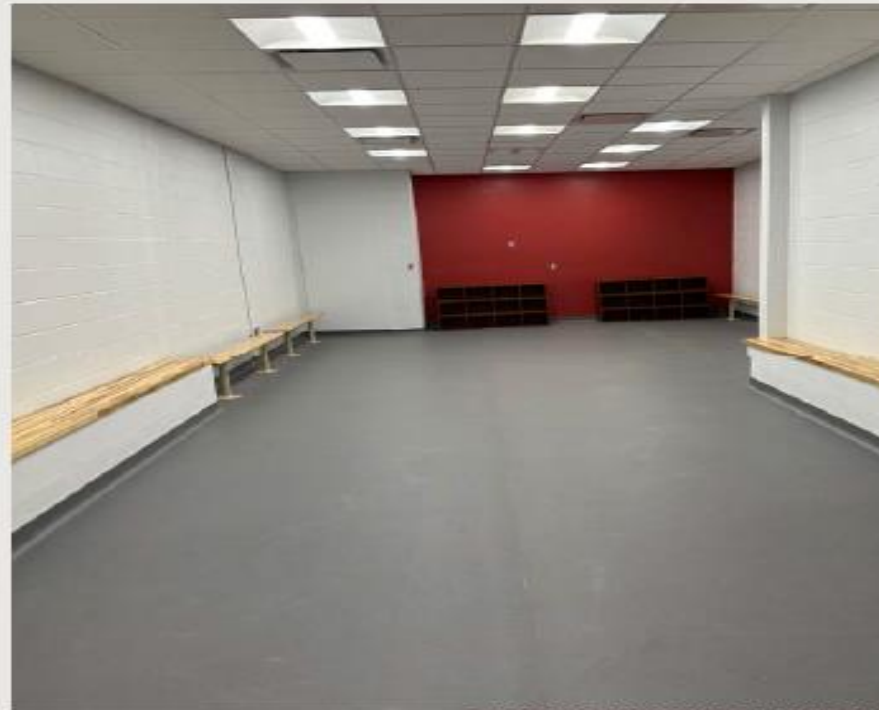
Recently Completed

✓ Bradley Center Women's Locker Room Expansion

 Before



After



Recently Completed

✓ Honors Lounge Renovation

Before



After



Ongoing Projects

- Student Center Transformer Replacement
- Athletic Field Lights
- Linden Hall (schematic design)
- Village Stairs Replacements



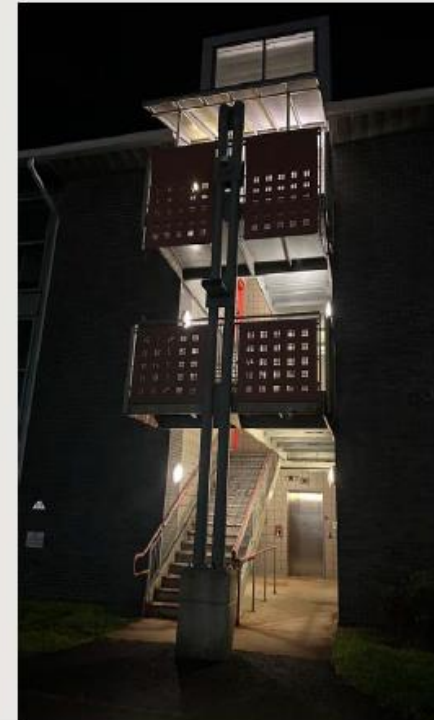
Before



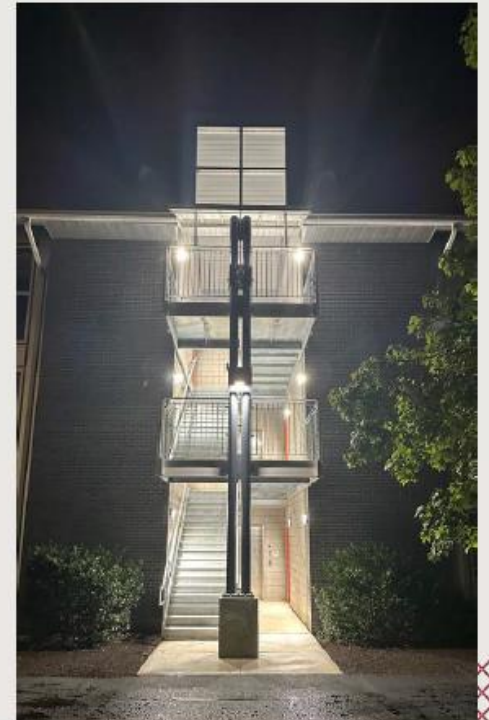
After



Before



After



Ongoing Projects

- Linden Hall (schematic design)



Units going to Linden: Public Safety (and ID Card Office), Student Health Services, Counseling Services, POER, Fiscal Health (Budget, Business Services), Grants, Events & Conferences

After Linden: ResLife and Student Mail Room back to C-wing, Indoor Spirituality Center in D-Wing, and several other potential changes

Policy Updates

- Student Expressive Activity Policy
 - Student Dissent → Expressive Activity
 - Defines Time, Place, Manner
 - Integrates Code of Conduct
 - Requests Registration of Events
 - Delineates Applicable Laws

Policy Updates

- Academic Freedom Policy
 - Revisions Advanced by Academic Policy Council
 - Integrated State Policy Prohibiting Discrimination, Code 9A, Labor Agreements
 - Informal Public Comment shared with FA, Provost, and Policy Committee
 - Policy Committee to advance for formal public comment
 - Emphasized Importance/Value of Academic Freedom
 - Connected right of Academic Freedom to responsibility that comes with it
 - Footnotes term “citizen”

Future Calendars

Jan. 2024: Integrated Calendar Task Force issued Report

Sept. 2024: President advanced decision making

Future Academic Years

Fall terms that start prior to Labor Day and generally conclude in mid-December. With the exception of Fall 2024, the terms all include Reading Days:

- Fall 2025: 8/27 Start, 9/1 Labor Day, 12/9 Reading Day, 12/16 End
- Fall 2026: 8/26 Start, 9/7 Labor Day, 12/8 Reading Day, 12/15 End
- Fall 2027: 8/25 Start, 9/6 Labor Day, 12/7 Reading Day, 12/14 End
- Fall 2028: 8/30 Start, 9/4 Labor Day, 12/12 Reading Day, 12/19 End

Spring terms that start after Martin Luther King Jr. Day and conclude in mid-May, and that all include Reading Days:


- Spring 2025: 1/21 Start, 5/6 Reading Day, 5/13 End
 - Spring 2026: 1/20 Start, 5/5 Reading Day, 5/12 End
 - Spring 2027: 1/19 Start, 5/4 Reading Day, 5/11 End
 - Spring 2028: 1/18 Start, 5/2 Reading Day, 5/9 End
 - Spring 2029: 1/16 Start, 5/1 Reading Day, 5/8 End
- 

Future Calendar Holidays

2025 Thanksgiving

- November 26 – College is open and does not close early (**Employee Wellness Day**)
- November 27 – College is closed for the Holiday
- November 28 – College is closed and employees are not charging leave time (essential employees will be provided the time to take at a later date)

2026 Thanksgiving

- November 25 – College is open and does not close early
 - November 26 – College is closed for the Holiday
 - November 27 – College is closed and employees are not charging leave time (essential employees will be provided the time to take at a later date)
- 
- A decorative red grid pattern in the bottom right corner of the slide.

Future Calendar: Employee & Community Wellness

Employee Wellness Day

11/26/24

- Vision Exams and Glasses/Contacts, 10am-1pm, SC 156-157
- Health Screenings, 11am-2pm, Friends Hall
- Massage/reflexology, 10am-1pm, Friends Hall
- Stress Management workshop, 10am, SC 158
- Investing for Success by TIAA
- Yoga, 12pm, Bradley Center Dance Studio
- Saving for Retirement with Empower, 1pm, SC 158
- Spin, 2pm, Bradley Center Dance Studio
- Tai Chi, 3pm, York Room

Food Drive

Benefits the RCNJ Food Pantry and Mahwah Center for Food Action

- Teaching and Learning: Cereal, Pancake mix (preferably just needs water), syrup
- Operational Integration: Soups, canned vegetables
- Executive: Stuffing mix, instant potatoes, rice, pasta, tomato sauce
- Student Well-being: Cake mixes, brownie mixes, frosting
- Fiscal Health: Coffee, tea, hot chocolate
- Outreach and Engagement: Macaroni and cheese, peanut butter

Shared Governance News

- **Ramapo Staff Association**
 - Next Meeting is November 18 at 2 p.m., Padovano Commons
- **Faculty Assembly**
 - Faculty Scholarship Symposia
 - October 30: Undergraduate Research
 - December 4: Community-engaged Scholarship, 10:30 a.m., SC158
- **Bischoff & Richardson Awards**
 - November 20, 3:30 p.m., York Room
 - Sharon Leathers, Bischoff Recipient
 - Kathleen Ray, Richardson Recipient



Questions?

